

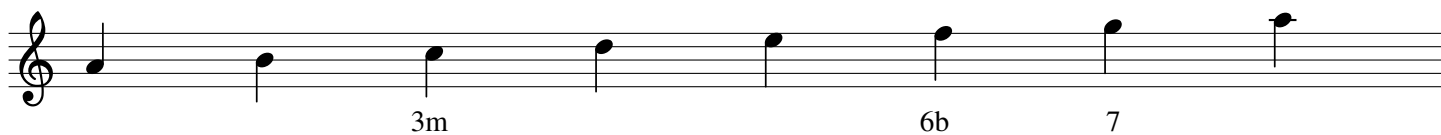


# Gammes mineures

Gamme Majeure



Gamme mineure RELATIVE ou NATURELLE



Gamme mineure HARMONIQUE



Gamme mineure MELODIQUE



Gamme mineure relative (Descendante)

Gamme mineure harmonique

Gamme mineure mélodique (Ascendante)





# Bourrée

Christoph Graupner

Musical notation for the first system (measures 1-4). The piece is in G minor (one flat) and 3/4 time. The first system includes a dynamic marking of *mf*. Fingerings are indicated by numbers 1, 4, 4, 1, 2, 1, 3. The bass line starts with a 5th finger on the first measure.

Musical notation for the second system (measures 5-8). This system concludes with a repeat sign and first/second endings. Fingerings 1 and 3 are shown in the final measure of the first ending.

Musical notation for the third system (measures 9-12). This system begins with a repeat sign and a dynamic marking of *p*. Fingerings 3, 3, 3, 3, 2, 1 are indicated. The bass line starts with a 2nd finger on the first measure.

Musical notation for the fourth system (measures 13-16). This system concludes with a repeat sign and first/second endings. Fingerings 3 and 2 are shown in the final measure of the first ending.